



SOULMATES

QUILT DESIGNED BY PAT BRAVO

«Matchmade»

FABRICS DESIGNED BY PAT BRAVO



TO BERRY



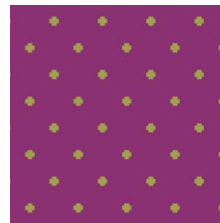
MTM-9100
INDICATION BERRY



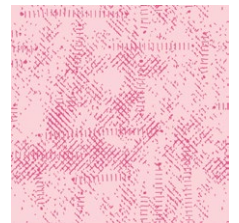
MTM-9101
THOUGHTS BERRY



MTM-9102
QUARTZ BERRY



MTM-9103
POSITIVITY

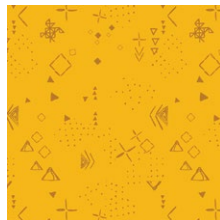


MTM-9104
EXPRESSIONS BERRY

TO GOLD



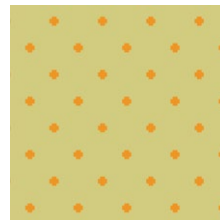
MTM-9200
INDICATION GOLD



MTM-9201
THOUGHTS GOLD



MTM-9202
QUARTZ GOLD

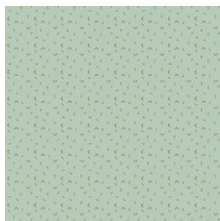


MTM-9203
POSITIVITY GOLD



MTM-9204
EXPRESSIONS GOLD

TO FOLIAGE



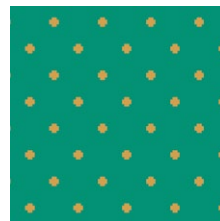
MTM-9300
INDICATION FOLIAGE



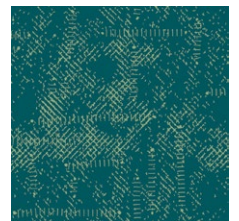
MTM-9301
THOUGHTS FOLIAGE



MTM-9302
QUARTZ FOLIAGE

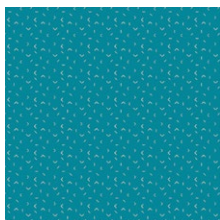


MTM-9303
POSITIVITY FOLIAGE



MTM-9304
EXPRESSIONS FOLIAGE

TO MIDNIGHT



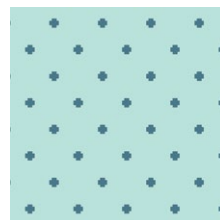
MTM-9400
INDICATION MIDNIGHT



MTM-9401
THOUGHTS MIDNIGHT



MTM-9402
QUARTZ MIDNIGHT



MTM-9403
POSITIVITY MIDNIGHT



MTM-9404
EXPRESSIONS MIDNIGHT



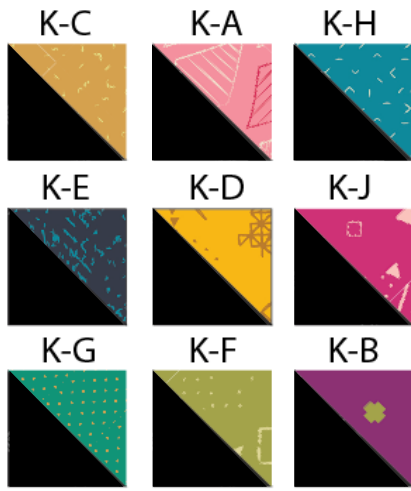


DIAGRAM 2

- Pair one **K** square right sides together with each of the squares from the other fabrics.
- Sew $\frac{1}{4}$ " on both sides of the marked line.
- Cut piece in half along the drawn line. Press seams open and trim half-square triangles into a $2\frac{3}{4}$ " square.
- You will have the following amount of HST for the following fabrics:

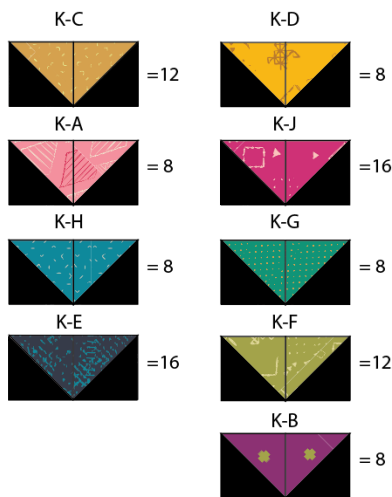


DIAGRAM 3

- Sew together two HST (in the same fabric combinations) as shown in diagram 3.
- Sew the HST to the Fabric K $2\frac{3}{4}$ " x 5" strips as shown. These will be used in the main 9-Patch blocks.

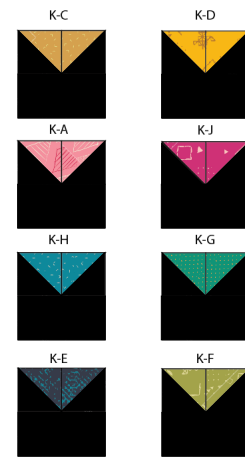


DIAGRAM 4

- Take (2) $2\frac{3}{4}$ " x $1\frac{1}{2}$ " rectangle from Fabric **A**, and (1) $2\frac{3}{4}$ " x $2\frac{3}{4}$ " from Fabric **K** and pair one rectangle on the top and one on the bottom of Fabric **K**



DIAGRAM 5

- Take (2) $1\frac{1}{2}$ " x 5" rectangles from Fabric **A** and pair one on the left side and the other on the right.

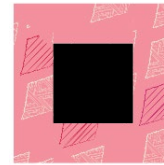


DIAGRAM 6

- Repeat the same process for Fabrics **B, C, D, E, F, G, H, J**

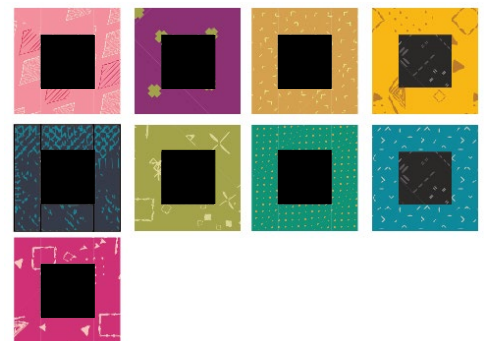


DIAGRAM 7

- Take (2) $1\frac{3}{4}$ " x $2\frac{1}{8}$ " rectangle from Fabric **A**, and (1) $1\frac{3}{4}$ " x $1\frac{3}{4}$ " from Fabric **K** and pair one rectangle on the top and one on the bottom of Fabric **K**



DIAGRAM 8

- Take (2) $2\frac{1}{8}$ " x 5" rectangles from Fabric **A** and pair one on the left side and the other on the right.

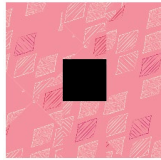


DIAGRAM 9

- Repeat the same process for Fabrics **B, C, D, E, F, G, H, J**

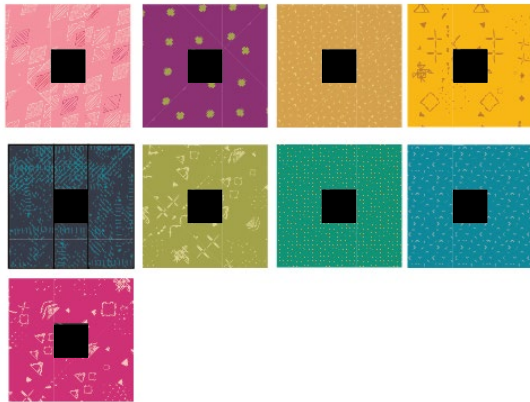


DIAGRAM 10

- Take (1) 14" x WOF from Fabric **K** and sub cut into (3) 14" x 14" square.
- Take (1) $1\frac{5}{8}$ " x WOF strip from Fabric **I** and sub cut it into (3) $1\frac{5}{8}$ " x 14" strips pairing each one with Fabric **K** them as diagram below.



DIAGRAM 11

- Cut every $1\frac{5}{8}$ " to make eighteen (18) strips.



DIAGRAM 12

- Set them aside

- Take (6) $1\frac{5}{8}$ " x 14" strips from Fabric **K** and pair (1) $1\frac{5}{8}$ " x $1\frac{5}{8}$ " square from Fabric **J** on each strip



DIAGRAM 13

- Arrange the blocks and sashing strips according to diagram 14.
- First sew the blocks and strips into rows, then sew the Fabrics **K/I** and **K/J** strips to each other into rows.
- Take the (24) $1\frac{5}{8}$ " x 14" strips from Fabric **K**, sew all rows together, making sure to align the sashing strips and blocks as shown in the cover illustration and below

